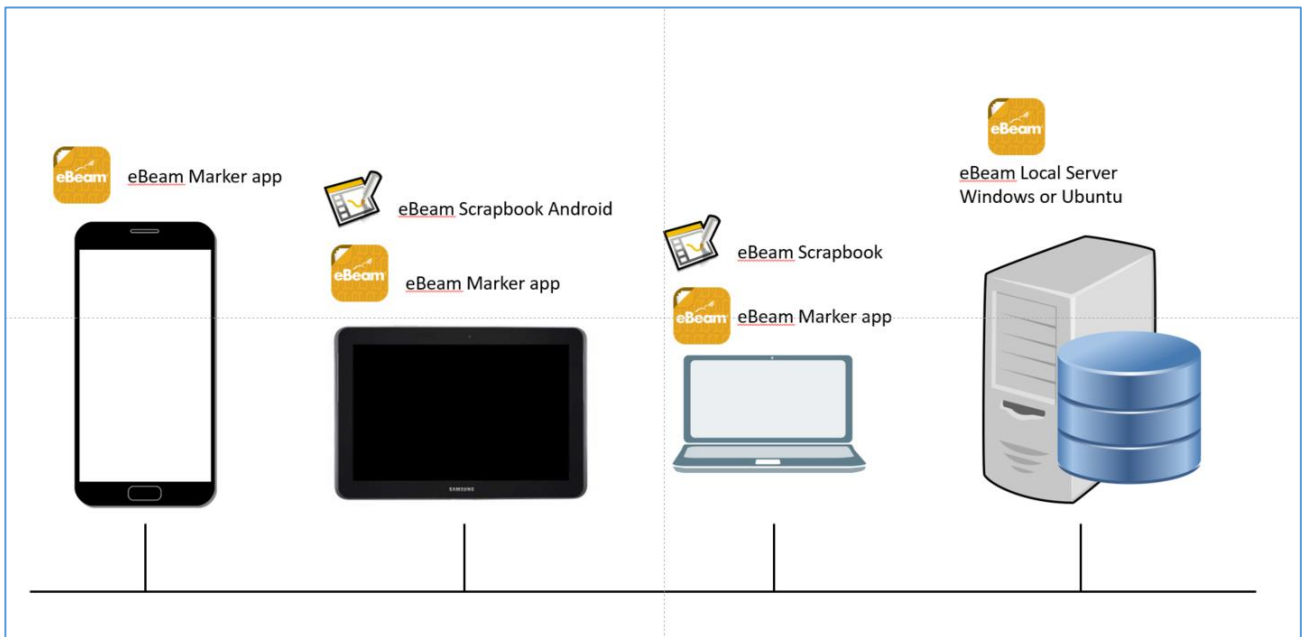


eBeam Meeting Server Setup

Introduction

If you do not want to allow any data out of your network, you can use the *eBeam Local Server*, which can be installed inside of your network.

Figure 1. Local Server conceptual diagram.

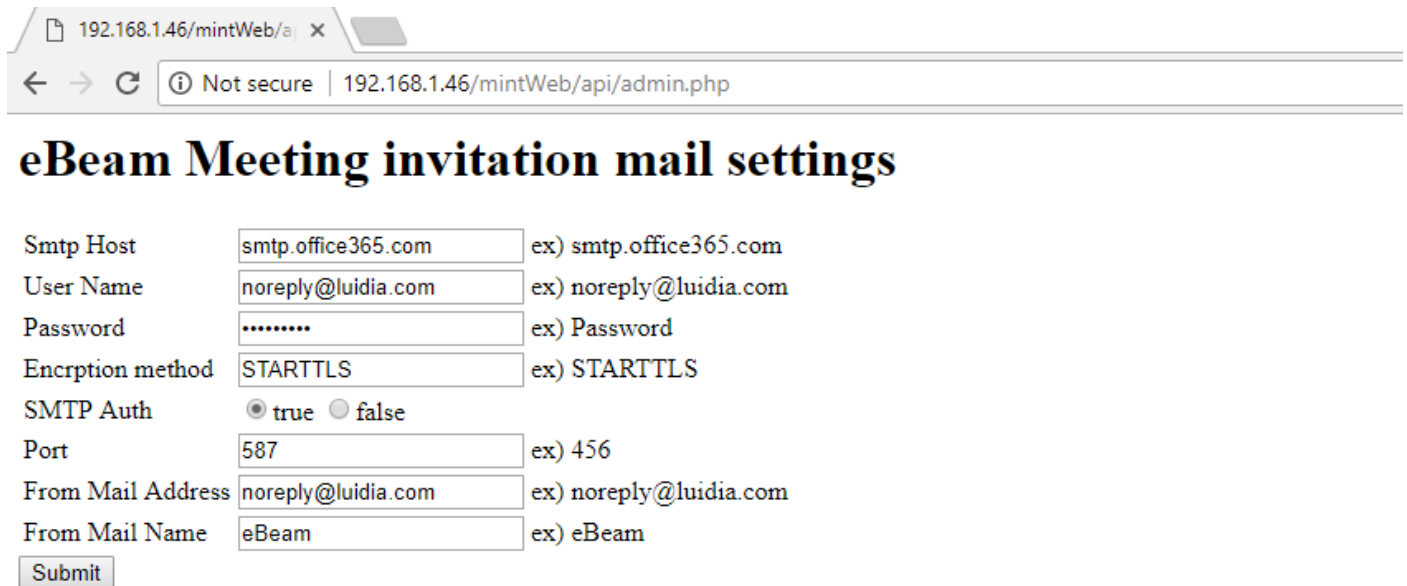


Installation of *eBeam Local Server*

- The *eBeam Local Server* should be installed inside of the accessible network of your company
- Network should be stable. Wired connection is needed.
- Our Local Server is compatible with Windows 7 or higher and Linux Ubuntu 16.04 64bit or higher
- The hardware spec depends on how you use the product, on average there is 12 G Memory and the 2G CPU machine can cover up to 1000 users
-

Installation on clean Ubuntu Linux machine.

1. Install Apache, Php, Mysql
 - 1.1 run setupenv.sh
2. Install eBeam Server package
 - 2.1 run setupserver.sh {ip} {port} {mysql_root_pwd}
ip: you can use ip address or domain name
port: the meeting server socket port. Not web port
mysql_root_pwd: root password of my sql which is set in step 1.1
ex) ./setupserver.sh 192.1.1.35 12509 ebeam
3. Setup invitation mail
 - 3.1 go to {Server}/mintWeb/api/admin.php



The screenshot shows a web browser window with the address bar displaying "192.168.1.46/mintWeb/api/admin.php". The page title is "eBeam Meeting invitation mail settings". The form contains the following fields and values:

Smtip Host	<input type="text" value="smtp.office365.com"/>	ex) smtp.office365.com
User Name	<input type="text" value="noreply@luidia.com"/>	ex) noreply@luidia.com
Password	<input type="password" value="*****"/>	ex) Password
Encription method	<input type="text" value="STARTTLS"/>	ex) STARTTLS
SMTP Auth	<input checked="" type="radio"/> true <input type="radio"/> false	
Port	<input type="text" value="587"/>	ex) 456
From Mail Address	<input type="text" value="noreply@luidia.com"/>	ex) noreply@luidia.com
From Mail Name	<input type="text" value="eBeam"/>	ex) eBeam

4. Client Setting

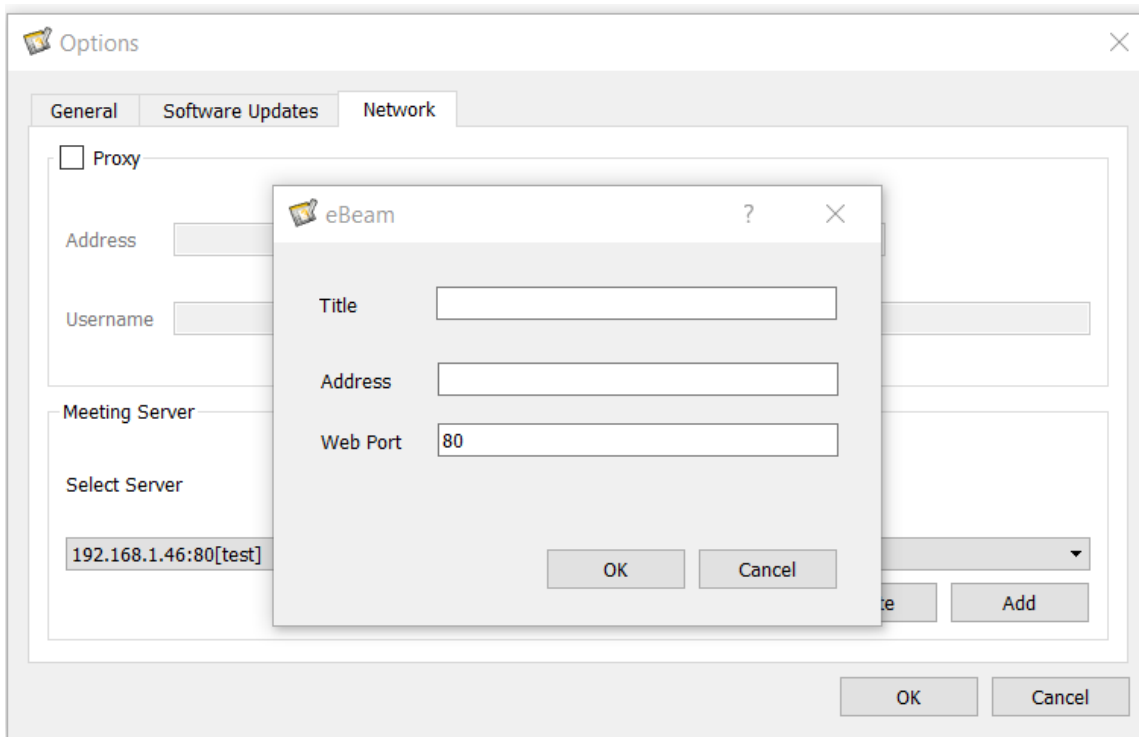
4.1 eBeam Scrapbook network setting

- Menu → Setting → Options

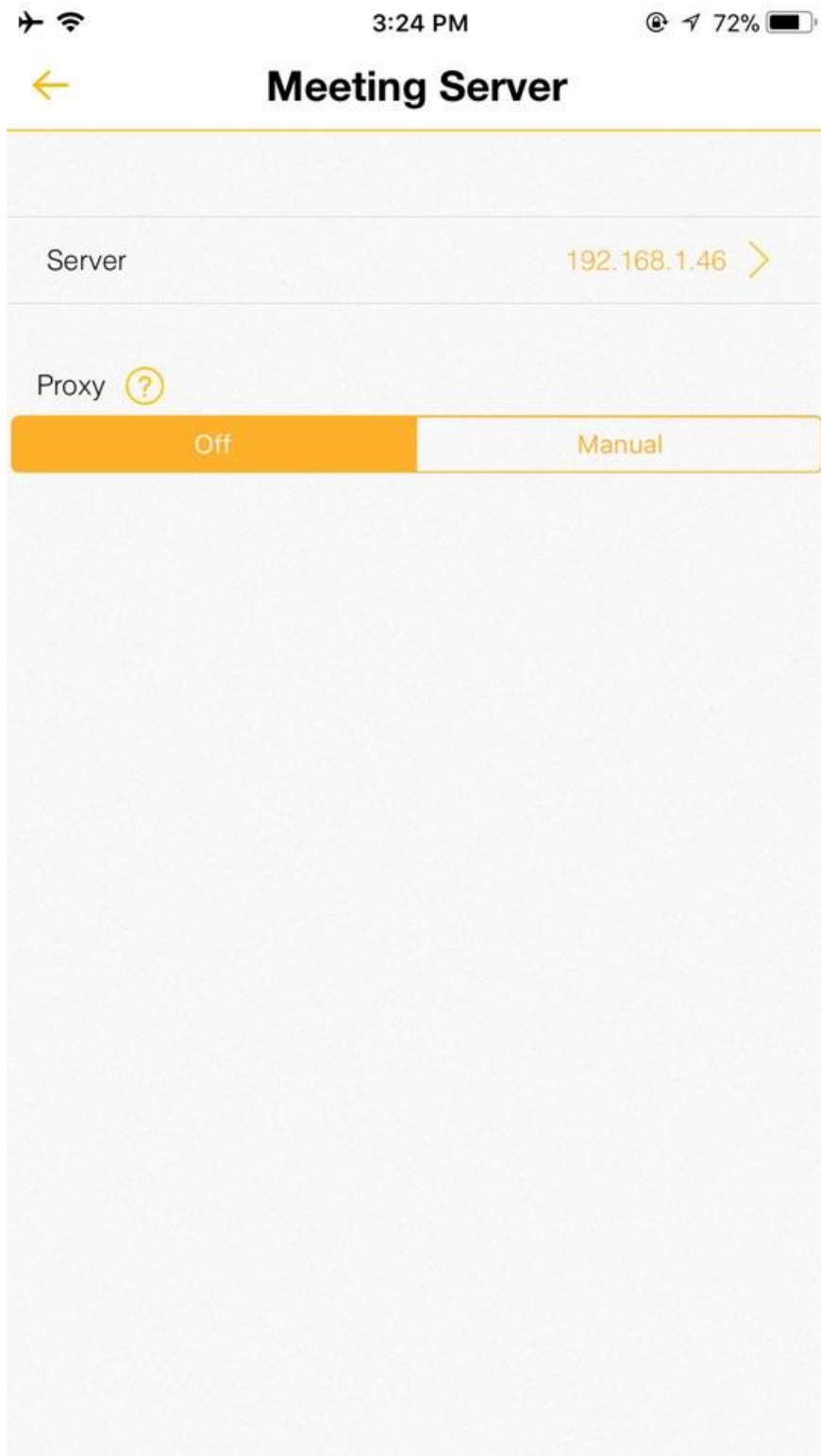
The image shows a screenshot of a software dialog box titled "Options". The dialog has three tabs: "General", "Software Updates", and "Network", with "Network" currently selected. The "Network" tab contains the following elements:

- A checkbox labeled "Proxy" which is currently unchecked.
- Below the checkbox, there are four input fields: "Address", "Port", "Username", and "Password". The "Port" field contains the value "0".
- A section titled "Meeting Server" containing a "Select Server" label and a dropdown menu.
- The dropdown menu currently displays "192.168.1.46:80[test]".
- Below the dropdown menu are two buttons: "Delete" and "Add".
- At the bottom right of the dialog are two buttons: "OK" and "Cancel".

- Add Local Server Information



4.2 eBeam Marker App network setting





3:24 PM

72%



Server

The server that currently in used is listed the below

192.168.1.46
192.168.1.46



* If you would like to add a new server, press "Add"

Enrolled server list

Add

eBeam Global
meeting.luidiammeeting.com:443

테스트
10.0.0.212:80



Edit



3:24 PM

72%



Server

User can choose wanted network environment

Server name

IP Address

Port

80

Complete